



Foster Avenue, Studley, B80 7QJ

Offers over £225,000

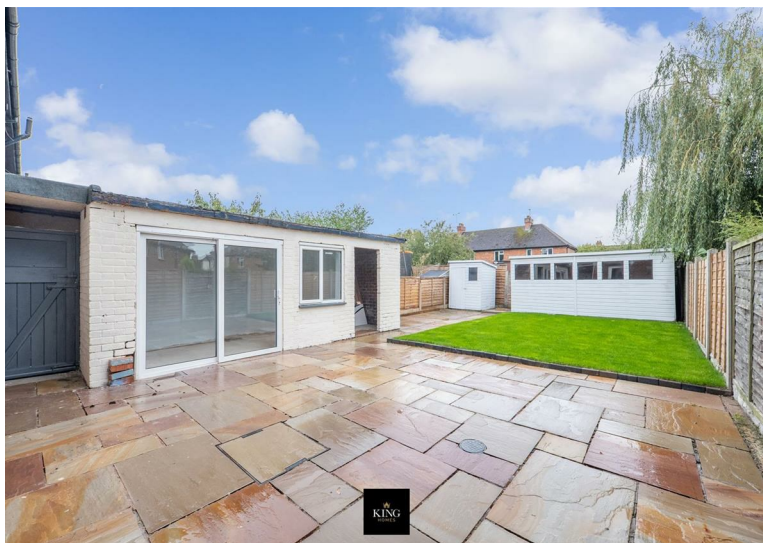

KING
HOMES

RECENTLY RENOVATED THROUGHOUT TO A VERY HIGH STANDARD

This newly renovated 3 bedroom terraced family home has been finished to a high standard, to include a brand new fitted kitchen and modern bathroom. The property benefits from 2 outbuildings, which could be converted to a range of alternate uses, subject to the relevant planning permissions being obtained.

Situated in the highly sought after village of Studley, the property offers excellent access to the village amenities including shops, restaurants, supermarkets and schooling, and on the doorstep of the open countryside. The nearby towns of Redditch, Alcester and Stratford-upon-Avon are all within a short driving distance.

Accommodation briefly comprises Entrance Porch, Hallway, Living Room, Kitchen, 3 x Bedrooms, ,Bathroom, Rear Garden and 2 x Outbuildings.



Entrance Porch

Hallway12'1" x 5'10" (3.69 x 1.80)

Living Room12'1" x 15'5" (3.69 x 4.70)

Kitchen7'6" x 19'3" (2.31 x 5.87)

Bedroom 111'0" x 11'10" (3.37 x 3.62)

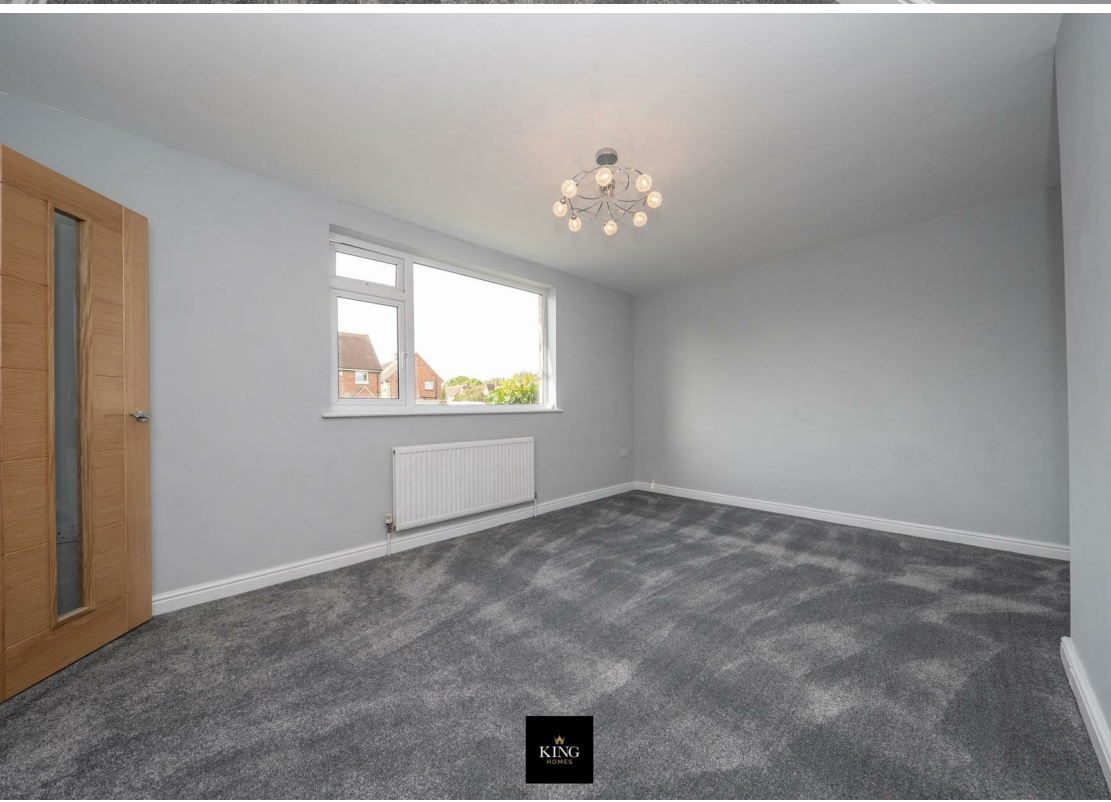
Bedroom 28'7" x 12'0" (2.63 x 3.67)

Bedroom 311'0" x 9'5" (3.37 x 2.88)

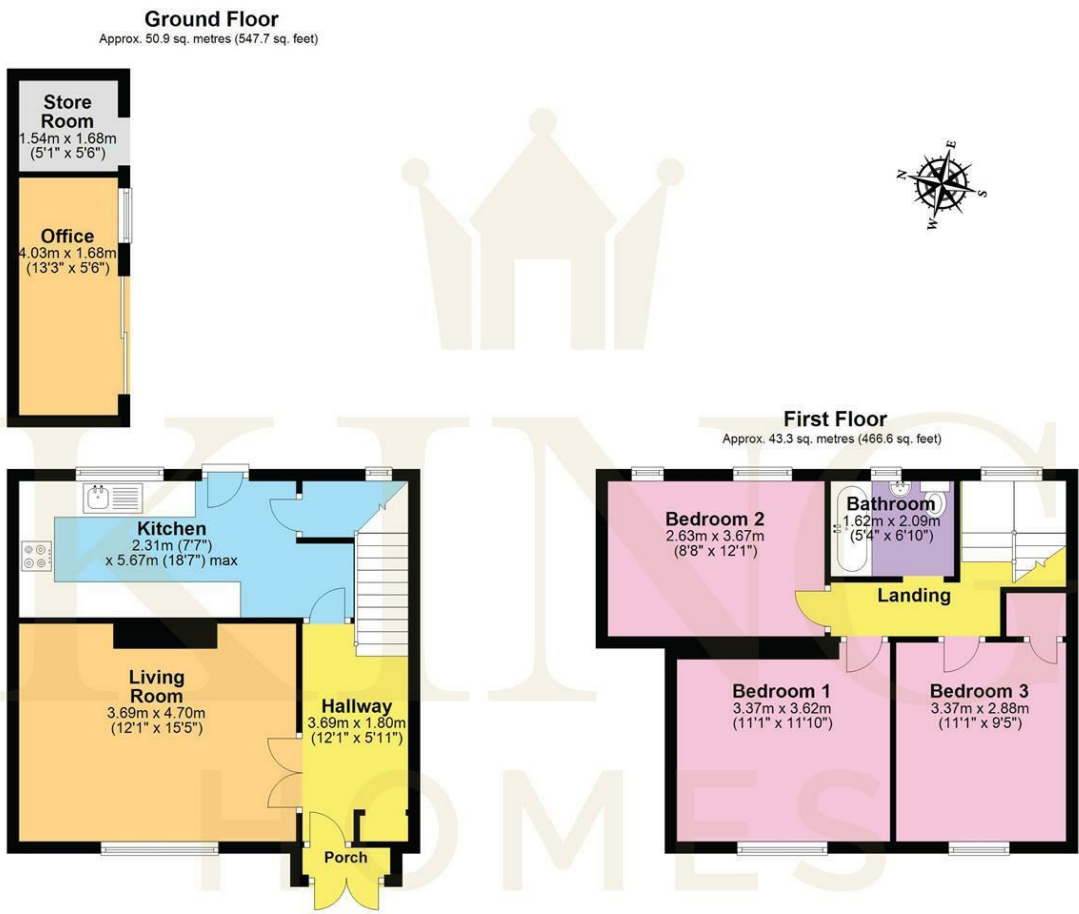
Bathroom5'3" x 6'10" (1.62 x 2.09)

Office13'2" x 5'6" (4.03 x 1.68)

Store Room5'0" x 5'6" (1.54 x 1.68)







Total area: approx. 94.2 sq. metres (1014.3 sq. feet)

DISCLAIMER - Floor plans shown are for general guidance only. Whilst every attempt has been made to ensure that the floorplan measurements are as accurate as possible, they are for illustrative purposes only.



Energy Efficiency Rating		
	Current	Potential
Very energy efficient - lower running costs		
(92 plus) A		85
(81-91) B		
(69-80) C	71	
(55-68) D		
(39-54) E		
(21-38) F		
(1-20) G		
Not energy efficient - higher running costs		
England & Wales	EU Directive 2002/91/EC	

Environmental Impact (CO ₂) Rating		
	Current	Potential
Very environmentally friendly - lower CO ₂ emissions		
(92 plus) A		85
(81-91) B		
(69-80) C	70	
(55-68) D		
(39-54) E		
(21-38) F		
(1-20) G		
Not environmentally friendly - higher CO ₂ emissions		
England & Wales	EU Directive 2002/91/EC	